

## Our year in review: 2018

The end of the year often causes people to reflect. At Butler County REC, we also took some time to think about 2018 and all it held for us and our members:

- No lost-time accidents
- Patronage of over \$676,000 paid to members
- Three directors earned their Director Gold Renewal Certifications
- One director earned his Credentialed Cooperative Director Certificate
- Employees volunteered over 1,200 hours during their personal time
- Share Brandt and Troy Feldman were elected to the board of directors following the retirements of John Klahsen and Don Feldman
- Almost 70 members contributed to RECare, our program of members helping members pay heating bills
- Over 75 load control receivers were installed on electric water heaters to manage electric use during peak demand times bringing the total to over 275 for a savings to the cooperative of approximately \$50,000
- Added an additional rebate of \$100 per ton for members installing an air source heat pump who also have an automatic gas backup and sign a load control agreement
- For enhanced office security, the lobby was enclosed with secured doors and a walk-up window for payments
- Over 200 work orders were completed by the line crew
- Lee Frerichs, apprentice lineman, joined Butler County REC
- Crew Chief Seth Bram earned his associate of applied science degree
- Rick Whalen, economic development director, was awarded National Rural Economic Developer of the Year from the National Rural Economic Development Association
- Crew Chief John Groen was named to the newly created position of GIS coordinator
- Jacob Risse, Sumner, represented Butler County REC on the Youth Tour to Washington D.C. and was selected as the Iowa representative for the NRECA Youth Leadership Council
- Work began on our second solar array, Solar II
- 795 likes on our Facebook page

When you reflect on 2018, we hope you see many successes, as well. Thank you for your trust in us, and we look forward to serving you in 2019 and beyond!

### A WORD FROM



Craig Codner, CEO  
ccodner@butlerrec.coop

Mark your calendars for the annual meeting on Saturday, April 6, 2019!

Craig & REC,

I wanted to make sure my thank you was shared for the electric frying pan I won last month from *Living with Energy* through the REC. It is a beautiful gift and as always, thank you for the great service!

Deb McWhirter, Allison



## Washington D.C. bound!

**High school juniors:** If your parents are Butler County REC members or residents of Aplington, Fairbank, Fredericksburg or Readlyn, you are eligible for a **FREE** week-long trip to Washington D.C. June 14-20.

If you are chosen as one of the top three applicants to be interviewed, you will also receive a **\$500 SCHOLARSHIP**.

Visit [butlerrec.coop](http://butlerrec.coop) or contact us at 319.267.2726 for an application!



# Electric cooperatives' post-election priorities

With the midterm elections in the rearview mirror, your electric cooperative is looking ahead at the impact and opportunities for rural America and electric cooperatives.

Electric cooperatives across the nation played an active role in the midterm election and worked to get to know each candidate running for federal office. This was particularly important since more than 60 members of Congress retired or ran for another office.

As we continue getting to know our new elected officials, we will continue advocating for policies that protect local business interests and advance the quality of life in our communities.

There are several opportunities for our elected leaders to find common ground and advance legislation to benefit our community.

Improving our nation's aging infrastructure is a great place to start. Congress and the White House should explore an infrastructure package that benefits all Americans, especially those at risk of being left behind in rural America. Congress should leverage an infrastructure package to help maintain and modernize the electric grid and connect rural communities to the modern economy.

A second area of possible bipartisan agreement lies in the need to produce a new farm bill. The farm bill, which authorizes numerous rural economic development programs, traditionally has enjoyed bipartisan support in Congress. Although the House and Senate have passed very different versions of a farm bill, we're hopeful that lawmakers can come to an agreement on a compromise bill that promotes rural economic development and protects Rural Utilities Service electric loan funding on which electric co-ops depend.

Electric cooperatives are engines of economic development. And we are proud to continue working toward a brighter and more prosperous rural America.



## Downed and Dangerous

If you see a downed power line, always assume it is energized and dangerous. Avoid going near it or anything in contact with the power line.



Downed power lines can energize the ground up to **35 ft.** away – so keep your distance.



Never drive over a downed line or through water that is touching the line.



If you see a downed line, notify the local authorities immediately.



Never try to move a downed power line, even if you think the line is deenergized or if you're using a non-conductive item – this will not prevent injury or death!

**LED holiday lighting rebate: \$2 per item**  
**Contact us for details!**

## Sign up for Smart Choices

Are you interested in reading more about energy efficiency? Electrical safety? Family finances?

You'll receive information on those topics and more in our monthly e-newsletter Smart Choices!

**Contact us today to sign up.**

**smart choices** 



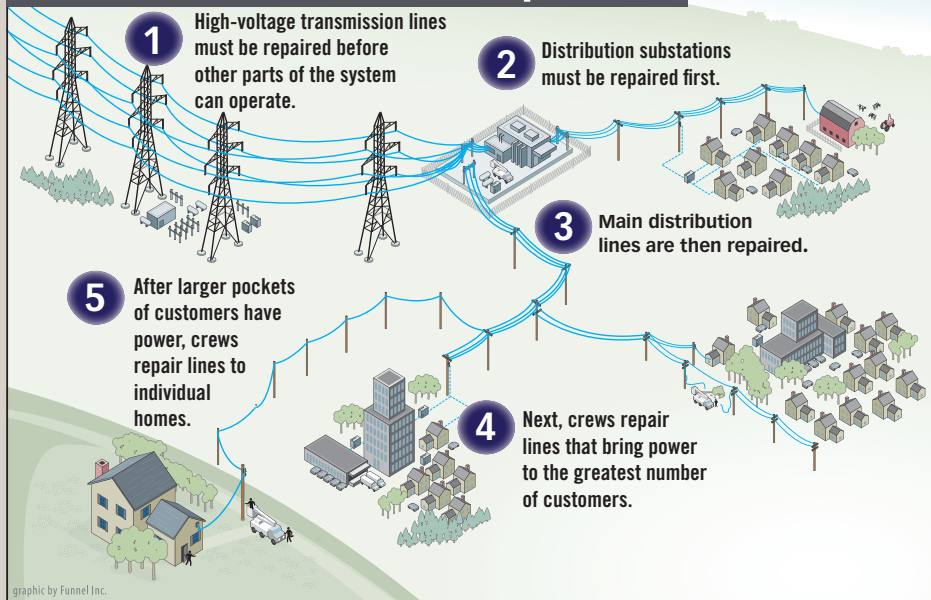
**Scholarships available**

We have information about scholarship opportunities for those planning to attend college or technical school next year!

**Contact us soon as deadlines vary.**

  
A Touchstone Energy®  
Cooperative

## How line crews restore power



When a widespread outage occurs, line crews work long, hard hours to restore service safely to the greatest number of members in the shortest time possible. Working from substations to homes results in faster repairs for the most members.

## POWER OUTAGE MAP

Information about power outages affecting electric cooperative members in Iowa is available online. To see a statewide map of power outages, go to your local electric cooperative's website:

- [www.butlerrec.coop](http://www.butlerrec.coop)
- [www.franklinrec.coop](http://www.franklinrec.coop)
- [www.grundycountyrecia.org](http://www.grundycountyrecia.org)
- [www.prairieenergy.coop](http://www.prairieenergy.coop)

## Beware of cheap chargers

The chargers that come with our electronics seem to disappear as often as a sock mate. Many people then reach for low-cost, generic chargers and charging cables.

But along with being a potential fire hazard, using cheaply made charging components and devices can also cause electrocution and may cost you more in the long run since they can cause damage to whatever's on the other end of the charging cable.

To keep safe around electrical devices and charging gear:

- Do not leave items unattended.
- Always keep charging items away from flammable objects, and do not take them to bed with you.
- Do not touch charging electronics with wet hands or while standing in water.
- Make sure charging components are certified by a reputable third-party testing laboratory.
- Only buy product-approved chargers and cables (those made or certified by the manufacturer).

**TIPS TO SAFELY CHARGE YOUR ELECTRONICS**

- Sale** Don't buy cheaply made, off-brand charging cubes and cables. They can be **potential fire hazards**, cause electrocution, or damage the device.
- Throw away charger blocks and cords that are worn or damaged and **make sure they are not hot** when charging devices.
- NOT IN BED** Only charge devices on a **hard, flat, noncombustible surface** to allow for adequate ventilation.
- Do not touch** any electronic devices that are charging **when you are wet** or standing in water.

Learn more at [SafeElectricity.org](http://SafeElectricity.org)

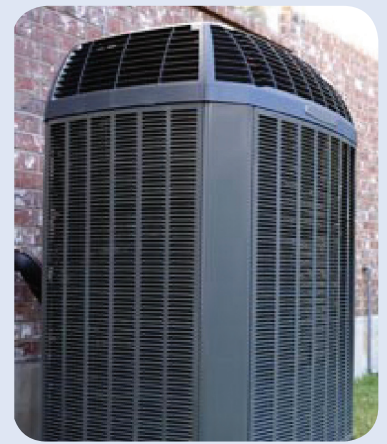
## Check out our rebates!

- **Appliances (Energy-Star Rated):** Clothes dryer, clothes washer, dishwasher, freezer, refrigerator
- **Central Air Conditioning**
- **Heat Pumps:** Air source and geothermal
- **Insulation & Weatherization:** Ceiling, foundation and wall insulation; duct insulation; weatherization
- **Lighting:** Bulbs, fixtures, security lights, holiday lights
- **New Homes**
- **Water Heaters:** Electric, heat pump, solar

**Small changes can mean big energy savings. Contact your electric cooperative to learn more about rebates.**



# Air source heat pump rebate adjustment



As of Jan. 1, 2019, we have adjusted our air source heat pump rebate.

Members installing an air source with a seasonal efficiency rating (SEER) below 15, can expect a rebate of \$50 per ton. Those installing an air source of 15 SEER and above will receive a rebate of \$250 per ton.

We also offer an additional \$100 per ton for members installing an air source heat pump who also have an automatic gas backup. A load control agreement must be signed allowing us to control the heat pump during systemwide peak energy demand.

## Air source heat pump rebates

**SEER below 15: \$50/ton**

**SEER 15 and above: \$250/ton**

**Additional \$100/ton for automatic gas backup**

Two units maximum per single-family dwelling/outbuilding; one rebate maximum per family in multi-family dwelling.

We are your source for energy information: free audits, rebates, load control opportunities, electric heating options, renewable generation, electric water heaters and so much more. Call Mike Boomgarden, energy advisor, at 888.267.2726 or visit us online at [butlerrec.coop](http://butlerrec.coop).

## Solar II project begins

During CEO Craig Codner's annual meeting speech in 2018, he mentioned that Butler County REC was researching the possibility of a second solar project. Your board of directors has since voted to move forward with this additional renewable generation.

"We are installing this array to show our support of renewable generation and to be able to assist our members in making informed decisions regarding renewable energy. The more we know and understand, the more assistance we can lend," said Codner.

In November of 2018 we broke ground for the new 150-kilowatt array located eight miles north of the town of Bremer. The array, called Solar II, is expected to generate an estimated 300,000-kilowatt hours per year, or enough power to serve approximately 20 to 25 homes annually.

Installed by Midland Development Corp., a division of Western Iowa Power Cooperative, Solar II is scheduled to be operational by April 1.



*Trenchers begin work for Butler County REC's new solar array, Solar II, located north of the town of Bremer.*



Iowa Choice Renewables is here to help you make the best decisions about your energy needs. To get started, call Butler County REC and ask for Matt Mahoney, energy services manager.

**INtouch** is published monthly for members of Butler County Rural Electric Cooperative  
521 North Main • PO Box 98 • Allison, IA 50602  
PHONES: 319.267.2726 or 888.267.2726 • FAX: 319.267.2566  
OFFICE HOURS: Mon. - Fri., 7:00 a.m. to 3:30 p.m.  
WEBSITE: [www.butlerrec.coop](http://www.butlerrec.coop) • E-MAIL: [butler@butlerrec.coop](mailto:butler@butlerrec.coop)  
Craig Codner, CEO • EDITOR: Anne Sesker, CCC



Follow us on Facebook at  
[www.facebook.com/bcrec](http://www.facebook.com/bcrec)

**smart choices**

Sign up for our e-newsletter at [www.butlerrec.coop](http://www.butlerrec.coop)

This institution is an equal opportunity provider and employer.