



Safety is our priority

At Butler County REC we care about the safety of you and your family and work hard to provide you with safe, reliable electric service.

Although we cannot see, smell, or hear electricity, it CAN be felt. One touch can be deadly. A moment of carelessness can cause serious injuries. If you see an electrical hazard — such as a downed power line, sagging wire, or a tree in power lines — contact us immediately at **319.267.2726** or **888.267.2726**. Phones are answered 24 hours a day.

Be safe around power lines

- Keep all objects at least 10 feet away from power lines.
- In areas where you are operating large farm equipment or vehicles, inspect for possible interference with overhead lines.
- Always be aware of overhead lines and know what to do if your equipment makes contact with overhead lines.
- Electrocution can occur when objects come in contact with overhead power lines.
- Never attempt to raise or move electric lines. Call Butler County REC.
- If farm equipment or a vehicle should come in contact with a power line, the operator should stay put in the equipment or vehicle until Butler County REC turns the power off. Call 911 or Butler County REC to report the incident. If you must leave the vehicle, jump clear, with both feet together, so you won't make contact with the ground and vehicle at the same time.

Iowa One Call Under the law, Iowans who want to dig, from planting to construction, must contact Iowa One Call at least 48 hours before work begins to have underground utilities marked. The number is toll-free: 811 or 800.292.8989. For more information, visit call811.com or iowaonecall.com.

Fuel tank safety If you have a gasoline or liquid propane tank outside your home or business, you should always be concerned with its safe operation. To prevent fuel vapors from collecting in the conduit and electrical boxes, fuel tanks should be located well away from meter poles. For propane tanks the minimum distance is 15 feet and for gasoline tanks, the minimum distance is 20 feet.

Education We routinely visit local schools to talk to students about electrical hazards and safety precautions. For more information about these visits or to schedule a safety demonstration for your group or organization, contact our Operations Department.

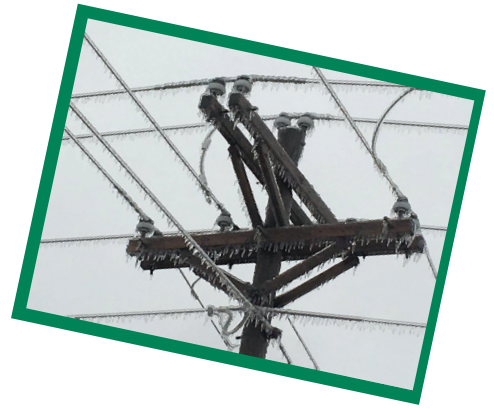
We provide co-op members with a monthly news magazine, *Iowa Electric Cooperative Living*, which includes our newsletter, *InTouch*. Our website and Facebook page at facebook.com/bcrec provide safety information that is both seasonal and related to current events. Be sure to like us on Facebook for the most current news.





Butler County REC

Your Touchstone Energy® Cooperative 



How to report an outage

If your power should go out, check your fuses or circuit breakers to rule out problems with the electrical service inside your home. Replace fuses or reset breakers if needed.

When the electricity we provide is off, please call us immediately:

319.267.2726 or 888.267.2726
Phones are answered 24/7

We will ask for the following information:

- Your name and phone number (If the phone number on our records is not correct, we will need additional information such as your address, account number, meter number, or map location number. This information is printed on your electric bill.)
- Time when your power went out
- If your neighbors are also without power

We appreciate a call anytime you have information about the cause of an outage or see a life-threatening situation—such as a downed power line, sagging wire, or a tree in a power line—that may be hazardous and could cause an outage. Safety is our highest priority.

During an outage

We encourage co-op members to call us as soon as possible to report a power outage. This is especially important for outages caused by storms.

While we continue our hard work to maintain our record of providing everyone we serve with safe and reliable power, the weather is something we cannot control. Storms require extra precautions in clean-up efforts and staying alert to hazards caused by downed power lines and tree limbs.

The employees of Butler County REC will begin working immediately to restore service as safely and quickly as possible. Primary lines serving hundreds of members are serviced first, and then the secondary lines serving just a few members are serviced. Medical facilities are given top priority.

Outages that occur in severe weather, or that last for an extended time, can place a heavy burden on the system at the moment power is restored. To prevent an overload on the system and possibly another outage, take these steps:

- Turn off every inside light except one.
- Turn off or unplug all unnecessary appliances.
- Turn down your thermostat.
- If the outage lasts over 60 minutes, turn off your electric water heater.
- When power comes back on, slowly turn lights and appliances back on.

If you use a portable generator for back-up power, make sure it is equipped with a double-throw switch. Generators not isolated from our power lines can produce “back feed” and send electricity back into our power lines. Lineworkers from Butler County REC or anyone else who touches a downed power line can be killed if a backup generator is not properly equipped and operated.

WEBSITE: butlerrec.coop • E-MAIL: butler@butlerrec.coop



Follow us on Facebook at facebook.com/bcrec



Follow us on Instagram at instagram.com/butlercountyrec.com

smart choices 

Sign up for our e-newsletter at butlerrec.coop